



Division of Spanco, Inc.

# ADJUSTABLE-HEIGHT ROLLING A-FRAME

## ANCHOR TRACK™ SYSTEM

### Assembly and Operation Instruction Manual



ISO 9001:2015 Registered  
Manual 103-0105

A N C H O R  
T R A C K

Effective Date: May 2021



## WARNING

# RIGID LIFELINES CONDITIONS OF USE AND WARNING STATEMENT

1. Read, understand, and follow the manual, assembly drawings, and warnings provided with your system **before** beginning installation.
2. This manual, and any other instructions, must be provided to the users of this equipment. The user must understand the equipment's proper use and limitations.
3. A fall event can result in serious injury or death. This equipment, when used properly, reduces the chances of those outcomes.
4. Always perform a hazard analysis **before use** that will identify impact hazards, swing hazards, or any other hazards that may exist. Address and correct all hazards **before use**.
5. Always have a written rescue plan that defines who will rescue a fallen worker, what equipment will be used, and optimum rescue response time. If the same system will be used for rescue, a minimum of a two-man system must be specified.
6. Follow all current requirements of ANSI Z359 (or CSA Z259 in Canada).
7. Each component and system must be employed and maintained in accordance with all OSHA and ANSI standards.
8. Per OSHA and ANSI (or CSA Z259 in Canada) requirements, designate a competent person who can fulfill obligations of all regulations.
9. Note the maximum number of users and weight capacities are listed on a label on the system. Exceeding the capacities listed on this label can result in serious injury or death.
10. Always check for overhead hazards, such as power lines, trees, overhead structures, or walls, before using or moving system.
11. Any component replacement, addition, or change to any portion of the system must be evaluated by a Qualified Person as defined by OSHA standards.
12. Never use this system for material handling.
13. Never use the system with scaffolding.
14. Never use the system alone without a monitor. Use the buddy system when using fall protection. The monitor, or "buddy," does not need to be attached to the system, but just nearby supervising.
15. Consult with a qualified person for minimum fitness requirements for workers. Determination of minimum fitness levels of workers prior to use of system is by others.
16. For mobile systems—It is the responsibility of the user and their management's Competent Person to determine that the system's base is level, the masts are plumb, and that the entire, leveled system is stable before every use.
17. For movable track systems—Always use the system in work spaces that allow you to move the system's runway as close as possible to the center of the work area.
18. The system must only be used on a flat, level, and firm surface. The surface must be firm enough to support vehicle traffic without compressing, deflecting, or distorting, and must be free of obstacles that might slow or hamper rolling of the caster wheels.
19. A maximum of two (2) workers may push the system at a time. Never push the system with more than two (2) workers.
20. Never push system with a powered vehicle unless the instructions specifically allow.
21. Only push the system in a direction perpendicular to the bridge beam.
22. Before each use, inspect the system for bent, broken, cracked, or missing components.
23. A competent person must thoroughly inspect the system **annually** and **after each fall event**.
24. There should never be any type of loading past the end stops for any reason.



## WARNING

### RIGID LIFELINES CONDITIONS OF USE AND WARNING STATEMENT

25. When connecting track sections on runway systems, track splice and truss splice plates are required. For trussed track, splice joint centers must be within maximum 48 inches of the hanger support centers unless otherwise specified. For plain track, splice track centers must be within maximum 18 inches of the hanger support centers unless otherwise specified.
26. Systems with flush clamp hangers do not require sway bracing. However, all systems mounted to the ceiling must be laterally and longitudinally braced with bracing provided by others.
27. It is the customer's responsibility to confirm that the system and components will work in and are acceptable for their specific application and environment.
28. For foundation-mounted systems, bracing is not required for non-seismic applications. However, if any sway is perceived as undesirable, lateral bracing can be installed to the system by others. To achieve desired rigidity for a specific application, Rigid Lifelines® recommends consulting a professional engineer in your area to satisfy all codes and ordinances. For foundation-mounted systems, chemical anchor bolts supplied by others are required and must provide approximately 7000-pound pull-out force. More accurate pull-out forces are available upon request.
29. Engineering of any attachment points must be done by others.
30. Component appearances and dimensions shown are approximate and subject to change without notice. All catalog dimensions are developed using standard components for the spans and capacities. Substitution of optional trolleys or other components will affect certain dimensions.
31. All Rigid Lifelines Anchor Track™ Systems meet or exceed OSHA and ANSI requirements.
32. Never load the track at an angle greater than specified in the system's user manual.
33. Never use the system with the attachment point below the D-Ring of the harness.
34. Only the following self-retracting lanyard (SRL) design specifications are acceptable for use on Rigid Lifelines Anchor Track Systems:
  - a) 900-pound maximum average arresting force (MAAF)
  - b) 4.5 feet-per-second lock up speed
  - c) Disk or drum braking mechanism
  - d) Wire rope SRL's can be used for indoor or outdoor applications
  - e) Fabric or web SRL's can be used only for indoor applications
35. The following energy-absorbing lanyards are not acceptable: rip-stitch packs, shock packs, or stretchable energy.
36. Choose the shortest length SRL that will allow the workers to perform their job function. The shortest length SRL will reduce total fall distance by reducing "cable cinching" on the internal SRL pulley. Fabric lanyards stretch under load. The longer the lanyard, the longer the stretch.
37. Never use metallic cables or metallic SRL's around electrical power sources.
38. Only an ANSI (or CSA in Canada) full-body harness is acceptable for use on Rigid Lifelines Anchor Track Systems.
39. Never use body belts on this system.
40. Never add additional carabiners, D-Rings, shackles, or connecting hardware to this system.
41. On Traveling Bridge Anchor Track Systems, always position the bridge(s) directly overhead of worker(s) at all times.
42. If a boom is provided, never apply a lateral load at the boom tip.
43. Never deviate from the above unless you have written permission and authorization from Rigid Lifelines.



## WARNING

Do not move the system while workers are still connected to it; doing so may result in serious injury or death.

Do not use the system on an incline; only use the system on surfaces that are firm and level. NEVER place the system near a ledge.

Follow the Inspection Checklists in this manual: the first checklist is to be reviewed before each use and the second checklist is for after a fall event and annual inspections.

**NEVER EXCEED 10 DEGREES OFF-PLUMB (OFF-CENTER) LOADING.**

**USE THE CASTER WHEEL BRAKES WHILE SYSTEM IS IN USE.** Ensure that caster wheel brakes are making contact with the caster material for maximum effectiveness.

Store the system with caster wheel brakes activated to prevent the system from rolling.

Push or pull the Adjustable-Height Rolling A-Frame system by hand only.

**While in use, the caster frame width must be at maximum distance to prevent system from falling over during a fall event.**

**While in use, the support legs must be at maximum span distance. No cantilever loading is allowed on this system.**

Never adjust system height or caster frame width while system is in use.

Never stand under the system when adjusting the system height, caster frame width, or while disassembling the system.

Caster frame assemblies contain an assembled cable assembly inside the inner and outer caster frame assembly tubes to prevent overspreading of the caster frame assemblies. Do not remove this cable or any hardware attached to the cable assembly.



## WARNING

**This system must be used with an ANSI-rated self-retracting lanyard (SRL).**

**If the system is used outdoors, it is highly recommended that a steel cable SRL with heavy-duty housing be used for improved durability against UV radiation and moisture.**

A web strap ANSI-rated SRL may be acceptable for use as long as a Competent Person has evaluated the situation and determined that there are no factors present that can have an immediate negative impact on the integrity of the SRL's webbing material AND that the Competent Person inspects the condition of the SRL's webbing and housing prior to each use.



## WARNING

**Completely retracting the SRL after each use (e.g., using a retrieval tagline) is essential: otherwise, the SRL's internal spring remains under tension, and it quickly loses its ability to arrest a freefall properly.**

**Retrieval taglines must never be used as an anchorage; doing so could result in serious injury or death.**



## WARNING

**While in use, the caster frame width must be at maximum distance to prevent system from falling over during a fall event.**

**While in use, the support legs must be at maximum span distance. No cantilever loading is allowed on this system.**

# TABLE OF CONTENTS

**CONDITIONS OF USE AND WARNINGS STATEMENT** ..... i-iii

**SYSTEM APPLICATIONS** ..... 2

**STANDARDS AND COMPLIANCE** ..... 2

**REQUIRED TRAINING** ..... 2

**ASSEMBLY INSTRUCTIONS** ..... 3

    1. Equipment Needed for Assembly ..... 3

    2. Inventory ..... 3

    3. Attaching the Caster Wheel Brakes to the Caster Assemblies ..... 4

    4. Attaching the Swivel Locks to the Caster Assemblies ..... 4-5

    5. Attaching the Caster Assemblies to the Caster Frame Assemblies ..... 5

    6. Attaching the Hanger Assemblies to the Beam Weldment ..... 5-6

    7. Attaching the Support Legs to the Beam Weldment ..... 6-7

    8. Attaching the Caster Frame Assemblies to the Support Legs ..... 8

    9. Attaching the Track to the Beam Weldment ..... 8-9

**FINAL ASSEMBLY** ..... 10

**INTERMEDIATE BUMPER INSTALLATION (IF SUPPLIED)** ..... 11

**SYSTEM HEIGHT ADJUSTMENT** ..... 12-13

**CASTER FRAME WIDTH ADJUSTMENT** ..... 14

**OPERATING INSTRUCTIONS** ..... 15

**MAINTENANCE** ..... 15

**DISASSEMBLY** ..... 15

**LABELING** ..... 16

**ADJUSTABLE-HEIGHT ROLLING A-FRAME INSPECTION CHECKLISTS** ..... 17

    Adjustable-Height Rolling A-Frame Anchor Track™ System ..... 17

    Annual Anchor Track™ System ..... 18

**PRODUCT WARRANTY COVERAGE** ..... 19

**ABOUT RIGID LIFELINES®** ..... BACK COVER

# SYSTEM APPLICATIONS

The Adjustable-Height Rolling A-Frame Anchor Track™ System is used for fall protection applications. This fall protection system is labeled with maximum number of users and maximum arresting force; follow all limitations as noted on system label. Each user must attach to this system using a personal fall arrest system.

## STANDARDS AND COMPLIANCE

Please refer to local, state, and federal (OSHA) requirements governing occupational safety for additional information regarding personal fall arrest systems. The Adjustable-Height Rolling A-Frame Anchor Track System meets or exceeds the requirements set forth in OSHA 1910, OSHA 1926, and ANSI Z359.

## REQUIRED TRAINING

This system is intended to be used by people who are trained in its correct application and use. It is the responsibility of the users and the users' management to assure that they are familiar with these instructions and are trained in the correct use and care of this equipment. Authorized users must also be aware of the operating characteristics, application limits, and the consequences of improper use, which can result in serious injury or death.

Every application of fall protection must be part of a comprehensive managed fall protection program. Each program must include, but is not limited to:

- Hazard analysis
- Authorized person training
- Competent person implementation
- Rescue procedures
- Rescue training

The above list is not a comprehensive list. Specific applications may need to include additional items, such as administrative controls or engineered controls. A Qualified Fall Protection Engineer or OSHA Qualified Person should review the comprehensive managed fall protection program to ensure that it is adequate for your specific application. For more information on how to set up a proper Fall Protection Program within your facility, follow ANSI Z359.2 *Minimum Requirements for a Comprehensive Managed Fall Protection Program*, which is available at: [www.assp.org](http://www.assp.org).



# ASSEMBLY INSTRUCTIONS

## 1. Equipment Needed for Assembly

- a) This manual
- b) Applicable safety equipment for workers' use during assembly, such as hard hats, safety shoes, etc.
- c) A telescoping fork truck or crane; ensure that your equipment has a five-ton capacity and can reach the height of your system.
- d) Torque wrench
- e) Saw horses
- f) Assorted drift pins
- g) Lifting straps
- h) Measuring tape
- i) Permanent marker
- j) Eight-foot or taller step ladder (or man/scissor lift)
- k) A spacious, level area for assembly (ex: a parking lot)
- l) Wrench/Socket sizes: 3/4 inch, 15/16 inch, and 1-1/8 inch
- m) Assembly time: allow two workers approximately eight hours for assembly.
- n) Four six-inch by six-inch (or larger) wood blocks
- o) *FAT-ASSEMBLY SHEET 1 OF 2*, hereafter referred to as *Adjustable-Height Rolling A-Frame Assembly Drawing*, will be included as a separate document.
- p) *FAT-ASSEMBLY SHEET 2 OF 2*, hereafter referred to as *Adjustable-Height Rolling A-Frame Label Placement Drawing*, will be included as a separate document.
- q) The Anchor Trolley™ User Instruction Manual (Manual 103-0054), which is packaged with the Anchor Trolley, will be included as a separate document.

## 2. Inventory

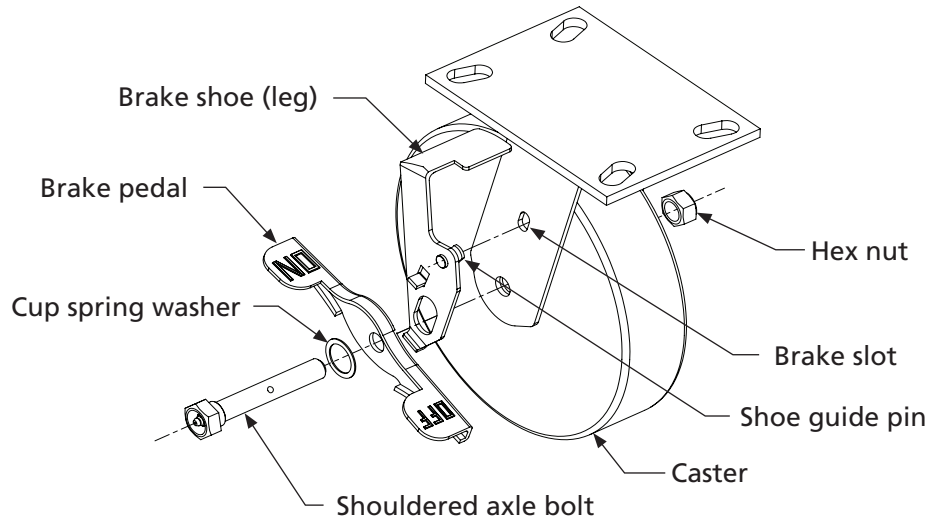
- a) Open all bundles and confirm that all components are accounted for: see *Building Materials Description* located in the top right corner of the *Adjustable-Height Rolling A-Frame Assembly Drawing*. Note that the quantity of components in an assembly is multiplied by the number of the assemblies.
- b) Check for damage to components that may have occurred during shipping. Check the caster assemblies for potentially concealed damage.

### 3. Attaching the Caster Wheel Brakes to the Caster Assemblies

Refer to Adjustable-Height Rolling A-Frame Assembly Drawing for Steps A Through J

- a) If you ordered pneumatic or dual-pneumatic casters, your casters ship with their caster wheel brakes already attached. If you ordered polyurethane casters, follow steps **b** through **j** to attach the caster wheel brakes. Refer to the caster wheel brake assembly drawing below throughout the assembly process.

Caster Wheel Brake Assembly Drawing



- b) Cut the zip tie holding the swivel lock on the caster assembly. You will need the swivel lock for step "4. Attaching the Swivel Locks to the Caster Assemblies."
- c) Using a 3/4-inch wrench and 3/4-inch socket and ratchet, unbolt the caster stud and remove the nut, bolt, washer, and caster.
- NOTE:** If the spacers fall out of the caster, reinsert them into the caster holes.
- d) With the top of the brake shoe facing towards the caster assembly, insert the guide pin on the brake shoe into the brake slot on the caster assembly.
- e) Using a screwdriver, slightly bend the brake shoe tab so that the brake shoe guide pin and brake shoe tab fit properly.
- f) With the brake pedal tabs pointed away from the caster assembly, line up the hole on the brake pedal with the hole on the brake shoe. "On" and "Off" on the brake pedal tabs should be visible when the caster is mounted to the system.
- g) Line up the caster holes with the brake shoe hole and brake pedal hole.
- h) With the washer on the bolt-side of the caster assembly, reinsert the longer axle bolt through the brake pedal, brake shoe, and caster. Reapply axle nut at this time.
- i) Using a 3/4-inch wrench and 3/4-inch socket and ratchet, tighten the caster nut until securely tightened.
- j) Repeat steps **b**) through **i**) to install the remaining caster wheel brakes.

### 4. Attaching the Swivel Locks to the Caster Assemblies

Refer to Adjustable-Height Rolling A-Frame Assembly Drawing for Steps A Through F

- a) The swivel lock ships zip tied to the caster assembly for pneumatic, dual-pneumatic, and polyurethane casters. For polyurethane casters, you should have removed the swivel lock while installing the caster wheel brakes.
- b) Insert the pin on the swivel lock into the groove beneath the caster plate on the caster assembly.
- c) Open the pin on the swivel lock by pulling and spinning the ring to fit into the groove at the end of the swivel lock.



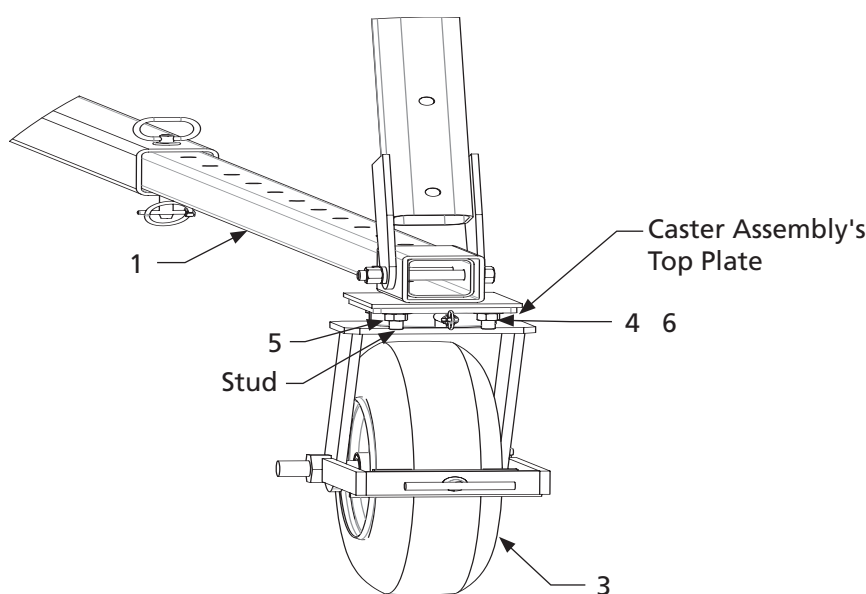
- d) Using two 3/4-inch bolts, washers, and nuts, bolt the swivel lock to the caster plate.
- e) Using a 3/4-inch wrench and 3/4-inch socket and ratchet, tighten the swivel lock bolts per the chart located on the lower right corner of the Adjustable-Height Rolling A-Frame Assembly Drawing.
- f) Repeat steps b) through e) to install the remaining swivel locks.

## 5. Attaching the Caster Assemblies to the Caster Frame Assemblies

Refer to Adjustable-Height Rolling A-Frame Assembly Drawing for Steps A Through E

- a) Lay each caster frame assembly (1 and 2 in the *Building Materials Description*) on the ground with the studs facing up.
- b) Per **Detail "A,"** place a caster assembly (3) on a caster frame assembly (1 or 2) so that the four studs extend up from the four holes in the caster assembly's top plate.
- c) Per **Detail "A,"** place a 1/2-inch flat washer (4), 1/2-inch lock washer (6), and 1/2-inch hex nut (5) on each stud so that the 1/2-inch lock washer (6) is between the 1/2-inch flat washer (4) and 1/2-inch hex nut (5). Torque all 1/2-inch wheel stud nuts (5) to 23 foot-pounds.

**Detail "A" (Caster Assemblies to Caster Frame Assemblies)**



Item	Description
1	Caster Frame Assembly
3	Caster Assembly
4	1/2-Inch Flat Washer
5	1/2-Inch Hex Nut
6	1/2-Inch Split Lock Washer

**NOTE:** Torque all 1/2-inch wheel stud nuts (A2) to 23 foot-pounds only.

**NOTE:** The flat washer (4), hex nut (5), and split lock washer (6) attach to a stud welded to the bottom of each caster frame assembly (1 and 2).

- d) Repeat steps a) through c) to attach the remaining caster assemblies (3 in the *Building Materials Description*) to the caster frame assemblies (1 and 2 in the *Building Materials Description*).
- e) After the caster wheel brakes, swivel locks, and caster assemblies have been attached to the caster frame assemblies, test the caster wheel brakes and swivel locks to ensure that they function properly.

## 6. Attaching the Hanger Assemblies to the Beam Weldment

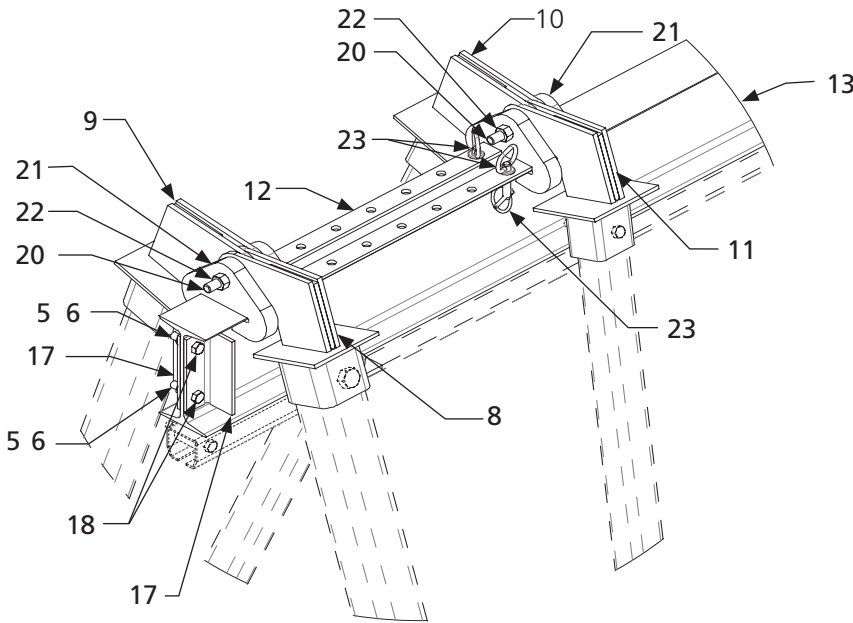
Refer to Adjustable-Height Rolling A-Frame Assembly Drawing for Steps A Through H

- a) Using saw horses, position the beam weldment (13 in *Building Materials Description*) so that the holes in the top of the beam weldment (13 in *Building Materials Description*) are facing up.
- b) Per **Detail "B,"** remove the four end stop angles (17), two on each end, from the beam weldment (13) and all hardware (5, 6, and 18). The angles (17) and hardware (5, 6, and 18) will be reinstalled later.

**NOTE:** Hanger assemblies ship assembled. They consist of components 8 through 12 and 20 through 22 in the *Building Materials Description*.

- c) Per **Detail "B,"** slide both hanger assemblies (8 through 12 and 20 through 22) onto the top of the beam weldment (13).
- d) Per **Detail "B,"** align the holes of the beam hanger weldment (12) with the holes on top of the beam weldment (13). For easier installation, use the holes that allow for maximum span distance as shown in **Detail "B."**
- e) Per **Detail "B,"** insert two hitch pins (23) through the aligned holes of the beam hanger weldment (12) and beam weldment (13). The hitch pins (23) must be installed on the inside of the hanger assembly (8 through 12 and 20 through 22) closest to the center of the beam weldment (13) and aligned vertically, meaning the hitch pins cannot be in the same row of holes.

**Detail "B" (Hanger Assemblies and End Stop Angles to Beam Weldment)**



**NOTE:** On systems with an overall width of 40 feet, **item 18** is a 1/2-inch diameter by 2-1/2-inch long bolt.

Item	Description
5	1/2-Inch Hex Nut
6	1/2-Inch Split Lock Washer
8	Main Leg Connector Hanger, Left
9	Main Leg Connector Hanger, Right
10	Brace Leg Hanger Weldment, Left
11	Brace Leg Hanger Weldment, Right
12	Beam Hanger Weldment
13	Beam Weldment
17	End Stop Angles
18	1/2-Inch by 2-Inch Hex Head Bolt
20	5/8-Inch Diameter Hex Head Bolt
21	Beam Hanger
22	5/8-Inch Diameter Hex Locknut
23	Linch Pin with Hitch Pin

- f) Per **Detail "B,"** insert the attached linch pins (23) through the holes on the bottom of the hitch pins (23).
- g) Repeat steps **d)** through **f)** to attach the remaining hanger assembly (8 through 12 and 20 through 22 in the *Building Materials Description*) to the beam weldment (13 in *Building Materials Description*).
- h) Per **Detail "B,"** reinstall the four end stop angles (17), two on each end, to the beam weldment (13) and all hardware (5, 6, and 18) by aligning the holes in the end stop angles (17) with the holes in the side of the beam weldment (13), inserting 1/2-inch diameter by 2-inch long bolts (18), and **securely tightening** 1/2-inch split lock washers (6) and 1/2-inch hex nuts (5) to the bolts (18) so that the split lock washers (6) are between the end stop angles (17) and hex nuts (5).

**NOTE:** On systems with an overall width of 40 feet, **item 18** is a 1/2-inch diameter by 2-1/2-inch long bolt.

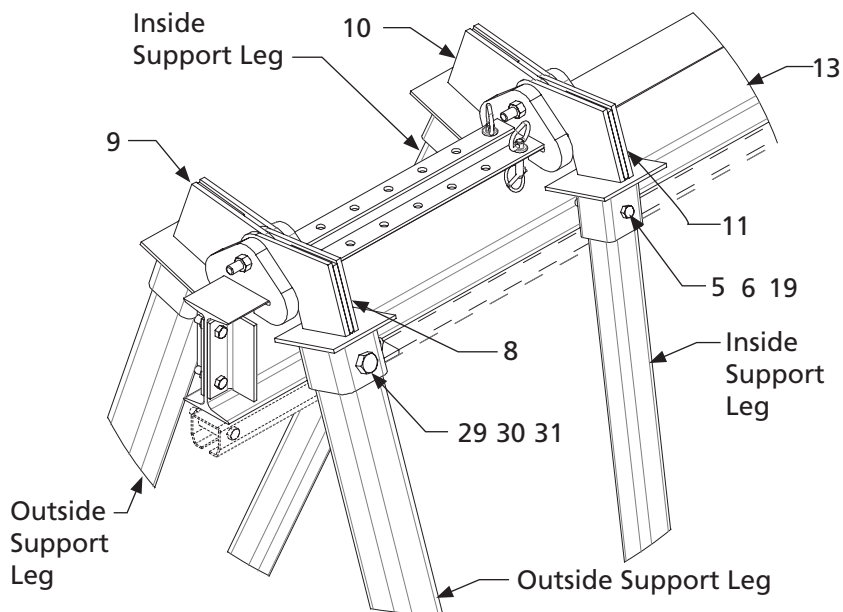
## 7. Attaching the Support Legs to the Beam Weldment

Refer to **Adjustable-Height Rolling A-Frame Assembly Drawing** for Steps A Through I

**NOTE:** Before continuing, ensure that the support legs (7 in the *Building Materials Description*) are at **minimum** height and leave them at **minimum** height throughout the installation process. If the support legs are not at **minimum** height, follow steps **c)** through **j)** on **page 18** to adjust each support leg to **minimum** height.

- a) With the beam weldment (13) still on saw horses, as per **Detail "B,"** slide the top of an outside support leg (longer leg with brackets welded on) into the right main leg connector hanger (9).
  - b) Per **Detail "B,"** align the top hole of the outside support leg with the hole in the right main leg connector hanger (9).
- NOTE:** Components 29, 30, and 31 are either 1/2-inch diameter or 3/4-inch diameter depending on the system size.
- c) Per **Detail "B,"** insert a 1/2-inch or 3/4-inch diameter by 5-1/2-inch long bolt (29) through the aligned holes in the outside support leg and right main leg connector hanger (9).
- NOTE:** On systems with an overall width of 20 feet and a trolley-hook height of 20 feet, **item 29** is a 3/4-inch diameter by 5-inch long bolt.
- d) Per **Detail "B,"** **securely tighten** a 1/2-inch or 3/4-inch split lock washer (31) and 1/2-inch or 3/4-inch hex nut (30) to the bolt (29) so that the split lock washer (31) is between the outside support leg and hex nut (30).
  - e) Per **Detail "B,"** slide the top of an inside support leg (shorter leg) into the right brace leg hanger weldment (11).
  - f) Per **Detail "B,"** align the top hole of the inside support leg with the hole in the right brace leg hanger weldment (11).
  - g) Per **Detail "B,"** insert a 1/2-inch by 4-1/2-inch bolt (19) through the aligned holes in the inside support leg and right brace leg hanger weldment (11).
- NOTE:** On systems with an overall width of 25 feet, **item 19** is a 1/2-inch diameter by 4-inch long bolt.
- h) Per **Detail "B,"** **securely tighten** a 1/2-inch split lock washer (6) and 1/2-inch hex nut (5) to the bolt (19) so that the split lock washer (6) is between the inside support leg and hex nut (5).
  - i) Repeat steps **a)** through **h)** to attach the remaining support legs (7) to the beam weldment (13).

#### Detail "B" (Support Legs to Beam Weldment)



**NOTE:** Components 29, 30, and 31 are either 1/2-inch diameter or 3/4-inch diameter depending on the system size.

**NOTE:** On systems with an overall width of 25 feet, **item 19** is a 1/2-inch diameter by 4-inch long bolt.

Item	Description
5	1/2-Inch Hex Nut
6	1/2-Inch Split Lock Washer
8	Main Leg Connector Hanger, Left
9	Main Leg Connector Hanger, Right
10	Brace Leg Hanger Weldment, Left
11	Brace Leg Hanger Weldment, Right
13	Beam Weldment
19	1/2-Inch by 4-1/2-Inch Hex Head Bolt
29	X/X-Inch by 5-1/2-Inch Hex Head Bolt
30	X/X-Inch Diameter Hex Nut
31	X/X-Inch Split Lock Washer

**NOTE:** On systems with an overall width of 20 feet and a trolley-hook height of 20 feet, item 29 is a 3/4-inch diameter by 5-inch long bolt.

## 8. Attaching the Caster Frame Assemblies to the Support Legs

Refer to Adjustable-Height Rolling A-Frame Assembly Drawing for Steps A Through L

- a) Extend the caster frame assembly (1 or 2 in *Building Materials Description*) to **maximum** length by first removing the attached linch pin from the bottom of the hitch pin.
- b) Then pull the inner caster frame tube until the last holes in the inner and outer caster frame tubes are aligned.
- c) Reinsert the hitch pin through the aligned holes in the inner and outer caster frame tubes.
- d) Reinsert the attached linch pin through the bottom of the hitch pin.
- e) Repeat steps a) through d) to extend the remaining caster frame assembly (1 or 2 in *Building Materials Description*) to **maximum** length.

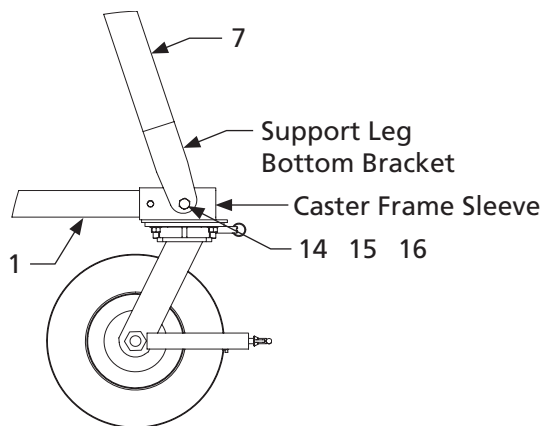
**NOTE:** Caster frame assemblies (1 or 2 in *Building Materials Description*) contain an assembled cable assembly inside the inner and outer caster frame assembly tubes to prevent overspreading of the caster frame assemblies. Do not remove this cable or any hardware attached to the cable assembly.

- f) Feed a lifting strap under the beam weldment (13) so that the beam's weight will be evenly distributed during lifting.
- g) Attach the other end of the lifting strap to a crane or forklift, and use the crane or forklift to lift the system into the air.

**NOTE:** Ensure that the system is high enough in the air to allow both caster frame assemblies (1 and 2 in *Building Materials Description*) to fit under the support legs (7 in *Building Materials Description*) during the connection process.

- h) Per **Detail "C,"** align the middle holes of the caster frame sleeve with the holes at the bottom of the outer support leg bottom bracket.

**Detail "C" (Caster Frame Assemblies to Support Legs)**



Item	Description
1	Caster Frame Assembly
7	Support Leg
14	5/8-Inch by 4-1/2-Inch Hex Head Bolt
15	5/8-Inch Diameter Hex Nut
16	5/8-Inch Split Lock Washer

**NOTE:** On systems with an overall width of 15 feet and a trolley-hook height of 17 feet, **item 14** is a 5/8-inch diameter by 5-inch long bolt.

- i) Per **Detail "C,"** insert a 5/8-inch by 4-1/2-inch bolt (14) through the aligned holes of the caster frame sleeve and the outer support leg bottom bracket.

**NOTE:** On systems with an overall width of 15 feet and a trolley-hook height of 17 feet, **item 14** is a 5/8-inch diameter by 5-inch long bolt.

- j) Per **Detail "C,"** **securely tighten** a 5/8-inch split lock washer (16) and 5/8-inch hex nut (15) to the bolt (14) so that the split lock washer (16) is between the outer support leg bottom bracket and the hex nut (15).
- k) Repeat steps h) through j) to attach the other end of the caster frame assembly (1 or 2 in *Building Materials Description*) to the support leg (7 in *Building Materials Description*).
- l) Repeat steps h) through k) to attach the remaining caster frame assembly (1 or 2 in *Building Materials Description*) to the support leg (7 in *Building Materials Description*).

## 9. Attaching the Track to the Beam Weldment

Refer to Adjustable-Height Rolling A-Frame Assembly Drawing for Steps A Through M



- a) Using a measuring tape and a permanent marker, measure and mark 18 inches in from each end of the track (24) for standard overhang. Also measure and mark your support center requirements. These locations are where the hanger brackets (27) should be installed on the track (24).

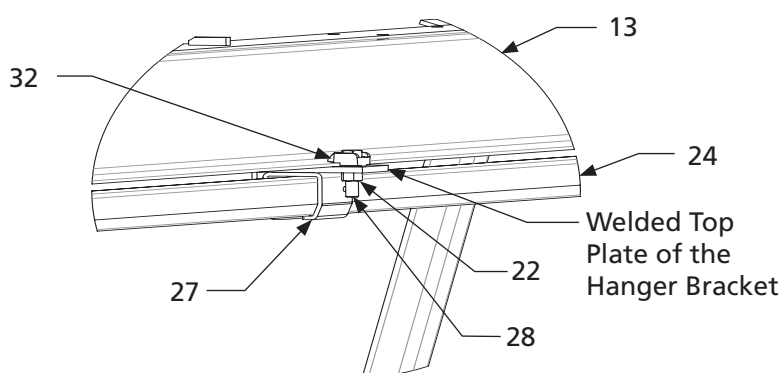
**NOTE:** 10 feet is the maximum support center for each one-person capacity track (eight feet for non-passable two-person capacity on one track). 18-inch overhang is standard. Refer to your Final Fabrication Drawing for correct overhang lengths and support center for your specific system.

- b) Per **Detail "E"**, slide all of the hanger brackets (27) onto the track (24) so that the welded top plate on the hanger bracket (27) is facing up away from the track (24).
- c) Per **Detail "E"**, slide each hanger bracket (27) onto the marked spots on the top of the track (24) so that the welded top plate on the hanger bracket (27) is facing up away from the track. Each hanger bracket (27) sits between the marked lines 3-1/2-inches apart.
- d) Per **Detail "E," securely tighten** the side set screw on each hanger bracket (27) until tight to align the track (24) against the side of the hanger bracket (27). Do not over tighten the set screw.

**NOTE:** Each hanger bracket (27) comes with a set screw threaded into the side. It doesn't matter which side. However, ensure that each hanger bracket (27) has the set screw threaded into the same side of the track (24).

- e) Per **Detail "E,"** insert eight 5/8-inch by 2-1/2-inch bolts (28) through eight 5/8-inch beam clips (32) so that the bolt heads are on top of the beam clips (32).
- f) Per **Detail "E,"** insert the bolts (28) and attached beam clips (32) through the holes on top of the welded top plate of the hanger bracket (27) so that the beam clips (32) are on top of the welded top plate of the hanger bracket (27).
- g) Per **Detail "E," hand tighten** one 5/8-inch hex locknut (22) to each bolt (28).
- h) Using a crane or forklift and lifting straps, lift the track (24 in *Building Materials Description*) to the bottom of the beam weldment (13 in *Building Materials Description*).
- i) Use a eight-foot step ladder or man/scissor lift to reach the track (24 in *Building Materials Description*) and beam weldment (13 in *Building Materials Description*).
- j) Per **Detail "E,"** position the track (24) and attached components (22, 28, and 32) so that the beam clips (32) on each hanger bracket (27) are on each side of the beam weldment (13).
- k) Per **Detail "E,"** place the beam clips (32) on each hanger bracket (27) so that they hold onto the bottom flange of the beam weldment (13). Adjust the beam clips (32) as needed by tightening or loosening the locknuts (22) until the beam clips (32) sit properly on the bottom flange of the beam weldment (13).
- l) Per **Detail "E,"** after each beam clip (32) is positioned properly on the bottom flange of the beam weldment (13), **securely tighten** each locknut (22) to keep the beam clips (32) in place.
- m) After the track (24 in *Building Materials Description*) has been securely tightened to the beam weldment (13), ensure that all beam clips (32) are installed horizontally and level within plus or minus five degrees. Then torque the 5/8-inch diameter locknuts (22) to 108 foot-pounds.

#### Detail "E" (Track to Beam Weldment)



Item	Description
13	Beam Weldment
22	5/8-Inch Diameter Hex Locknut
24	Track
27	Hanger Bracket
28	5/8-Inch by 2-1/2-Inch Hex Head Bolt
32	Beam Clip

# FINAL ASSEMBLY

Refer to Adjustable-Height Rolling A-Frame Assembly Drawing for Steps A Through E

- a) Ensure that the track (24 in *Building Materials Description*) is secured properly to the beam weldment (13 in *Building Materials Description*), that the beam weldment is secured properly to the support legs (7 in *Building Materials Description*), and that the caster frame assemblies (1 and 2 in *Building Materials Description*) are secured properly to the support legs.
- b) Confirm that all of the system's nuts are torqued to the required specifications below prior to removing support rigging (your telescoping fork truck or crane).

Bolt Diameter	Hex Nut Torque	Minimum Hex Locknut Torque
*1/2 Inch	78 Foot-Pounds	51 Foot-Pounds
**5/8 Inch	154 Foot-Pounds	93 Foot-Pounds
3/4 Inch	257 Foot-Pounds	151 Foot-Pounds
7/8 Inch	341 Foot-Pounds	224 Foot-Pounds
1 Inch	514 Foot-Pounds	325 Foot-Pounds

**NOTE:** \*The 1/2-inch hex nuts (5) on the caster frame assemblies' studs should be torqued to 23 foot-pounds.

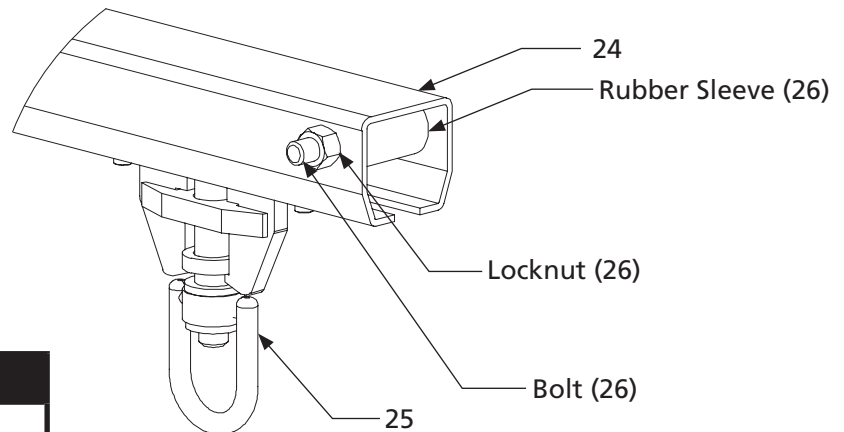
\*\*The 5/8-inch diameter locknuts (22) on the hanger assemblies (27) should be torqued to 108 foot-pounds.

- c) Per **Detail "F,"** insert your Anchor Trolley™ (25) into the track (24). For a multiple track system, install one Anchor Trolley per track.

**NOTE:** The 1/2-inch by 3-1/2-inch end stop bolt, 1/2-inch diameter hex locknut, and rubber sleeve ship in hardware kits labeled **500ES** (26).

- d) Per **Detail "F,"** install the track's end stops (26) by inserting the 1/2-inch by 3-1/2-inch bolts (26) through the holes at both ends of the track (24) and through the rubber sleeves (26).

**Detail "F" (Trolley and End Stops to Track)**



**NOTE:** The 1/2-inch hex locknuts (26) should be torqued until **securely tightened** against the track (24). Be careful not to damage the track in any way.

Item	Description
24	Track
25	Swiveling Connector Anchor Trolley
26	End Stop Bolt
26	1/2-Inch Hex Locknut
26	End Stop Rubber Sleeve

- e) Attach and torque the end stop nuts (26) until **securely tightened** against the track (24).

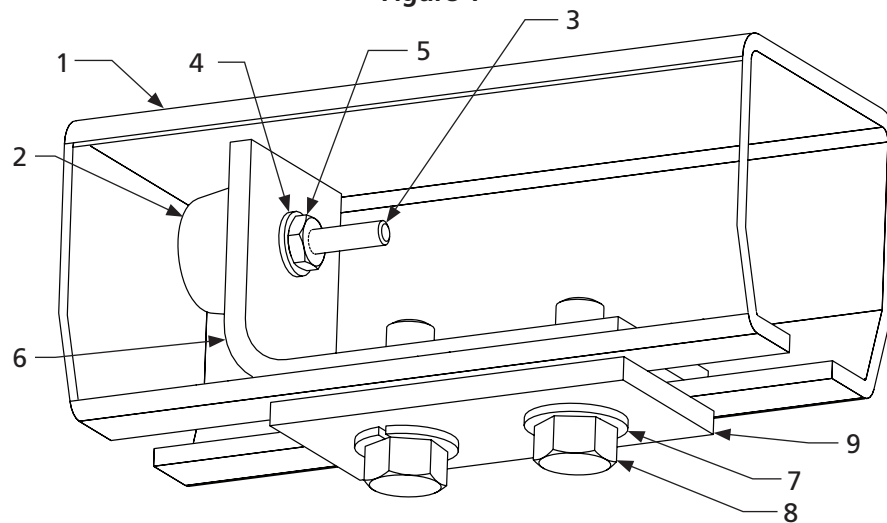


# INTERMEDIATE BUMPER INSTALLATION (IF SUPPLIED)

**NOTE:** Follow the approval drawing, if provided, to prevent overloading of the track and system.

1. Using a man or scissor lift, remove an end stop from the end of the track if end stop is present.
2. Per **Figure 1**, slide the top plate (6) and attached components (2, 3, 4, and 5) into the track (1) and to the desired location in the track. Ensure that the rubber bumper (2) is facing the trolley.
3. Per **Figure 1**, insert two bolts (8) through two split lock washers (7).
4. Per **Figure 1**, align the holes in the bottom plate (9) with the holes in the top plate (6). Ensure that the bottom plate (9) is underneath the track (1).
5. Per **Figure 1**, securely tighten the bolts (8) and attached split lock washers (7) through the aligned holes in the bottom plate (9) and top plate (6) so that the bolt heads are underneath the bottom plate (9). Ensure that the split lock washers (7) are between the bolt head and the bottom of the bottom plate (9).
6. Using a torque wrench, torque 3/8-inch diameter bolts to 33 foot-pounds. Torque 1/2-inch diameter bolts to 78 foot-pounds. See the tables below.
7. Reinsert the end stop that was removed in step 1.

**Figure 1**



**NOTE:** Intermediate bumpers should not be used as end stops.

## 500 Series Track (P/N: 1500IB)

Item	Description
1	Track
2	Rubber Bumper
3	10-32 NC by 1-1/4-Inch Machine Screw
4	#10 Lock Washer
5	10-32 NC Nut
6	Top Plate
7	3/8-Inch Split Lock Washer
8	3/8-Inch by 1-Inch Hex Head Bolt
9	Bottom Plate

**NOTE:** For part number 1500IB, item 8 requires a 9/16-inch wrench or socket.

## 600, 700, and 900 Series Track (P/N: 1700IB)

Item	Description
1	Track
2	Rubber Bumper
3	10-32 NC by 1-1/4-Inch Machine Screw
4	#10 Lock Washer
5	10-32 NC Nut
6	Top Plate
7	1/2-Inch Split Lock Washer
8	1/2-Inch by 1-1/2-Inch Hex Head Bolt
9	Bottom Plate

**NOTE:** For part number 1700IB, item 8 requires a 3/4-inch wrench or socket.

# SYSTEM HEIGHT ADJUSTMENT

## Without Height Adjustment Kit

**NOTE:** **Never** stand under the system when adjusting the system height, caster frame width, or while disassembling the system.

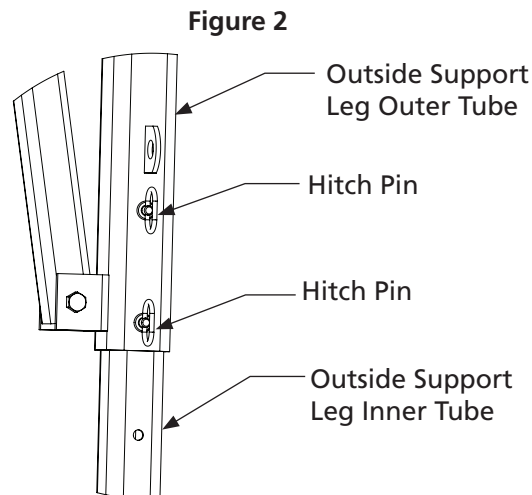
- a) Secure the Anchor Trolley™ to the beam weldment in the center of the track.
- b) Using a crane or forklift and lifting straps, slightly lift the beam weldment to relieve the weight from the hitch pins in the support legs.

**NOTE:** Ensure not to damage the track in any way.

- c) Remove the attached linch pins from the hitch pins.
- d) Remove the hitch pins from the support leg.
- e) Slowly pull or push the bottom of the support leg to lengthen or shorten the support leg.

**NOTE:** Support legs will not adjust at the same pace.

- f) When the support leg reaches the desired height, align the holes in the top and bottom of the support leg.
- g) Per **Figure 2**, reinsert the hitch pins through the aligned holes in the outsider support leg outer and inner tubes. The hitch pins should be inserted into the two holes in the outside support leg outer tube.



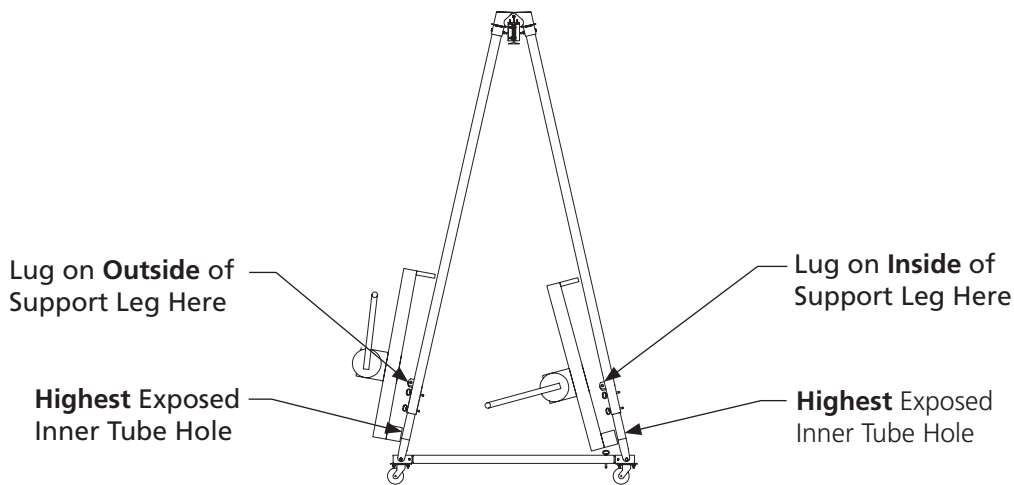
- h) Reinsert the attached linch pins through the hitch pins.
- i) Repeat steps c) through h) to adjust the remaining support legs.
- j) Ensure that each support leg has the same number of holes visible in the outside support leg inner tube and two hitch pins in the outside support leg outer tube as per **Figure 2**.
- k) After you have reinserted two hitch and attached linch pins into each support leg and have ensured that each support leg has the same number of holes visible in the outside support leg inner tube, you can lower the beam weldment and remove the crane or forklift and lifting straps.

## With Height Adjustment Kit (Part Number THA-1T)

**NOTE:** **Never** stand under the system when adjusting the system height or caster frame width, or while disassembling the system.

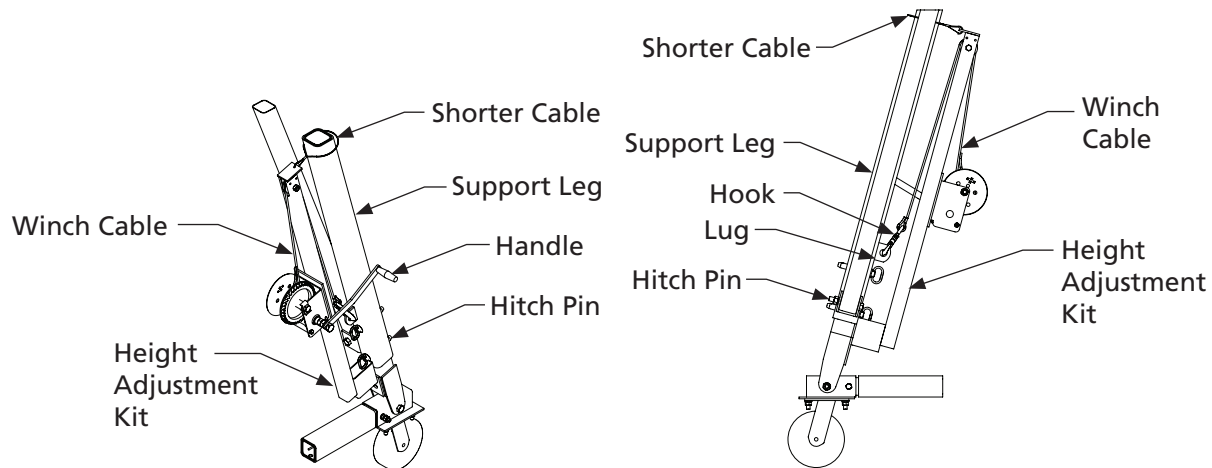
- a) Secure the Anchor Trolley™ to the beam weldment in the center of the track.
- b) Remove the bottom hitch and attached linch pin from one support leg.
- c) Align the hole in the bottom of the adjustment kit with the highest exposed inner tube hole. Refer to **Figure 3** for proper height adjustment kit orientation.

Figure 3



- d) Insert the removed hitch and attached linch pin through the aligned hole in the adjustment kit and support leg.
- e) Per **Figure 4**, wrap the shorter cable with attached clip at the top of the height adjustment kit around the support leg.

Figure 4



- f) Insert the shorter cable into the attached clip.
  - g) Per **Figure 4**, attach the hook to the welded lug on the outside support leg. Refer to **Figure 3** to ensure that the correct lug is used.
  - h) Crank the handle until the winch cable is tensioned.
  - i) Remove the remaining hitch and attached linch pin from the support leg.
  - j) Slowly crank the handle up or down to lengthen or shorten the support leg.
- NOTE:** **Never** adjust a support leg more than two holes (one foot) at a time to prevent system binding. After a support leg has been adjusted two holes, the height adjustment kit must be repositioned before adjusting each support leg two additional holes (one foot). Repeat this process until the desired height is reached.
- k) After adjusting the support leg up to two holes (one foot) at a time, reinsert the hitch and attached linch pin through the bottom hole of the outside support leg outer tube. See **Figure 2** on page 12.
  - l) Repeat steps **b)** through **k)** to adjust the remaining support legs.
  - m) Ensure that each support leg has the same number of holes visible in the outside support leg inner tube. See **Figure 2** on page 12.
  - n) Remove each height adjustment kit.

- o) Reinsert the hitch pins so that both hitch pins are in the two holes in the outside support leg outer tube. See **Figure 2** on page 12.
- p) Reinsert the attached linch pins through the hitch pins.
- q) Ensure that each support leg has two hitch and attached linch pins through the two holes in the outside support leg outer tube. See **Figure 2** on page 12.

## CASTER FRAME WIDTH ADJUSTMENT

**NOTE:** **Never** stand under the system when adjusting the system height, caster frame width, or while disassembling the system.

- a) Using a crane or forklift and lifting straps, slightly lift the beam weldment to relieve the weight from the hitch pins in the caster frame assemblies.

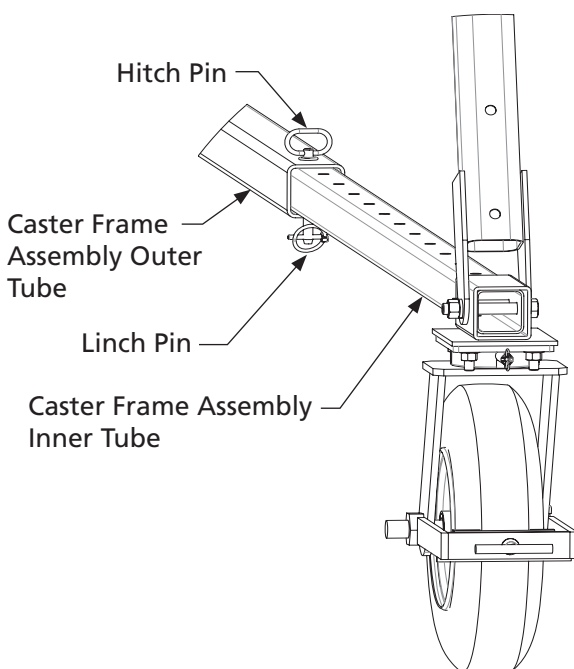
**NOTE:** Ensure not to damage the track in any way.

- b) Per **Figure 5**, remove the hitch and attached linch pins from a caster frame assembly.

**NOTE:** Caster frame assemblies contain an assembled cable assembly inside the inner and outer caster frame assembly tubes to prevent overspreading of the caster frame assemblies. Do not remove this cable or any hardware attached to the cable assembly.

- c) Per **Figure 5**, push or pull the caster frame assembly inner tube to the desired width.
- d) Per **Figure 5**, align the holes in the caster frame assembly inner and outer tubes.
- e) Per **Figure 5**, reinsert the hitch pin through the aligned holes in the caster frame assembly inner and outer tubes.
- f) Per **Figure 5**, reinsert the linch pin through the hitch pin.
- g) Repeat steps **b)** through **f)** to adjust the remaining caster frame assembly.
- h) Per **Figure 5**, ensure that each caster frame assembly has the same number of holes visible on the caster frame assembly inner tubes.
- i) Ensure that both caster frame assemblies have properly secured hitch and linch pins.
- j) After you have reinserted the hitch and attached linch pins into each support leg and have ensured that each caster frame assembly has the same number of holes visible in the caster frame assembly inner tube, you can lower the beam weldment and remove the crane or forklift and lifting straps.

**Figure 5**



### **WARNING**

**WHILE IN USE, THE CASTER FRAME WIDTH MUST BE AT MAXIMUM DISTANCE TO PREVENT SYSTEM FROM FALLING OVER DURING A FALL EVENT.**

**WHILE IN USE, THE SUPPORT LEGS MUST BE AT MAXIMUM SPAN DISTANCE. NO CANTILEVER LOADING IS ALLOWED ON THIS SYSTEM.**

# OPERATING INSTRUCTIONS

1. Make sure a written fall protection plan is in place.
2. **Confirm that the system's support legs are plumb and the system is being used on a firm, level surface. NEVER place system near a ledge.**
3. Position the Adjustable-Height Rolling A-Frame system with its track(s) as close as possible to the center of your work area.
4. **NEVER exceed 10 degrees off-plumb (off-center) loading.**
5. All caster wheel brakes must be engaged while system is in use.
6. **This system must be used with an ANSI-rated self-retracting lanyard (SRL),** per your training and the instructions that came with your equipment. If not already connected, attach your SRL to the system's Anchor Trolley™ connector using an approved offset-D locking carabiner. Don your full-body safety harness and then connect the SRL's snaphook to your harness's D-ring.
7. Push or pull the Adjustable-Height Rolling A-Frame system by hand only.
8. While in use, the caster frame width must be at **maximum** distance and the support legs must be at **maximum** span distance. **No cantilever loading is allowed on this system.**
9. Never adjust system height or caster frame width while system is in use.

# MAINTENANCE

1. Visually inspect the system before each use and fully inspect the system after a fall event and annually. Refer to the ADJUSTABLE-HEIGHT ROLLING A-FRAME INSPECTION CHECKLISTS in the next section of this manual for checklists for *Adjustable-Height Rolling A-Frame Anchor Track™ System* and *Annual Anchor Track™ System*.
2. Grease the caster assemblies' swiveling section and axles to ensure proper lubrication **at least monthly** with low melting point lithium grease, which can be purchased at any automotive store.
3. For a full list of Caster Inspection Points, see the *Adjustable-Height Rolling A-Frame Anchor Track™ System* checklist.
4. **If the system fails ANY of the inspection points on any of the inspection checklists, immediately remove the system from service and call Rigid Lifelines® at 800-869-2080 for instructions.**
5. During the first month after a new installation, a weekly inspection of the system should be performed using the *Annual Anchor Track™ System Inspection Checklist*. It is important to note that every system application and use will be different, meaning some conditions of use will require more frequent inspection. Examples of such conditions include two or three shift operations or working with or near corrosive chemicals or elements.
6. Refer to the Anchor Trolley™ User Instruction Manual (Manual 103-0054), which comes packaged with the Anchor Trolley, for its trolley inspection checklists.
7. Download and print additional blank inspection checklists from the literature page at [RigidLifelines.com](http://RigidLifelines.com).

# DISASSEMBLY

**Warning:** Disassembly must be performed by a skilled rigger. All parts must be secured to prevent falling during all stages of disassembly.

1. Before disassembling the Rigid Lifelines Fixed-Height Rolling A-Frame, ensure that each component is safely rigged and secure.
2. Read and understand each step before beginning the disassembly process.
3. To disassemble the system, follow the assembly instructions in reverse order.

**Warning:** Do not stand under the system during disassembly.

# LABELING

The letters correspond to the letters on the Adjustable-Height Rolling A-Frame Label Placement Drawing. All labeling must be legible and attached to the Adjustable-Height Rolling A-Frame system. For replacement labels, contact Rigid Lifelines®.

## RIGID LIFELINES LABEL PLACEMENT DISCLAIMER

If system is shipped unpainted or without properly secured labels, proper label placement is the sole responsibility of the end user. Follow the Label Placement Drawing shipped with this user manual to place labels correctly. Rigid Lifelines cannot be held liable for any damage or injury resulting from omitted or improper label placement.

**"A"**

P/N 53-0549

**"B"**

P/N 53-0206

**"C"**

P/N 53-0047

**"D"**

P/N 53-0023

**"I"**

P/N 53-0039

**"F"**

P/N 53-0550

**"G"**

P/N 53-0551

**"H"**

P/N 53-0552

**"J"**

P/N 53-0590

**"K"**

P/N 53-0590

**"E"**

P/N 53-0359

### Note 1 on Adjustable Height Rolling A-Frame Label Placement Drawing

- Label **53-0549 "A"** should be centered just above the top hole on the outside support leg on both sides.
- Label **53-0206 "B"** should be centered on both sides of the beam weldment.
- Label **53-0047 "C"** should be placed on both ends of the track on both sides.
- Label **53-0023 "D"** should be placed to the right of label **"B"** on both sides.
- Label **"E"** should be centered on the track on both sides and is **P/N 53-0535** for one person systems, **53-0536** for two person systems, and **53-0359** for **three to eight** person systems, along with **53-0413** through **53-0418** respectively. Labels **P/N 53-0413** through **53-0418** are the capacity numbers three through eight for the Anchor Track Label and should be placed to the right of the line following "Rigid Lifelines."
- Label **53-0550 "F"** should be centered just above label **"A"** on both sides.
- Label **53-0551 "G"** should be centered on each caster frame assembly outer tube above the hole for the linch pin.
- Label **53-0552 "H"** should be centered just above label **"D"** on both sides.
- Label **53-0039 "I,"** when adjusted to maximum height, should be centered on both sides on top of each outside support leg above the top hole.
- Label **"J"** should be centered on both sides of the beam weldment and on all four outside support legs.
- Label **53-0590 "K"** should be placed on the vertical legs at eye level (approximately 62 inches from the ground).



# ADJUSTABLE-HEIGHT ROLLING A-FRAME ANCHOR TRACK™ SYSTEM INSPECTION CHECKLIST

## Before Each Use

Inspector Name: \_\_\_\_\_

Date: \_\_\_\_\_

System Number: \_\_\_\_\_

Model: \_\_\_\_\_



Division of Spanco, Inc.

INSPECTION POINTS	Inspection Result (✓)	
	PASS	FAIL
1. Test the swiveling connector(s) on each trolley to verify that each trolley rotates and swivels freely.		
2. Verify that the trolley(s) can easily and smoothly roll the full length of the runway track(s).		
3. Check all system welds for cracks.		
4. Check system components for corrosion.		
5. Check system components for bent or damaged areas.		
6. Check support structure for stability.		
<b>Caster Inspection</b>		
1. Inspect casters for visible signs of damage or excessive wear.		
2. Check each caster unit for potentially concealed damage.		
3. Visually check that all caster studs are present and tight.		
4. Ensure that the caster's axles are properly secured.		
5. Ensure that the casters' wheel brakes and swivel locks perform properly.		
6. Ensure that the caster wheel brakes are making contact with the caster material for maximum effectiveness.		

©2021. All Rights Reserved. All specifications and product designs subject to change without prior notice.

# AFTER A FALL EVENT AND ANNUAL ANCHOR TRACK™ SYSTEM INSPECTION CHECKLIST

Inspector Name: \_\_\_\_\_

Date: \_\_\_\_\_

System Number: \_\_\_\_\_

Model: \_\_\_\_\_



INSPECTION POINTS	Inspection Result (✓)	
	PASS	FAIL
1. Check that the beam clamps are installed horizontally within + / - five degrees.		
2. Check that end stop bolts are present and have locknuts installed.		
3. Using a torque wrench, check that all bolts are present and torqued to values shown on Assembly Drawing.		
4. Check that splices, if supplied, are centered on track joints.		
5. Verify that capacity labels are present, attached, and legible. See Label Placement Drawing.		
6. Verify that the number of trolleys matches the value on the capacity label.		
7. Verify that the fall arrest system is not being used for material handling.		
8. Check the track for levelness within + / - 1/4 inches per 20 feet of track.		
9. Check the track flanges. Track flanges cannot be bent downward more than five degrees.		
10. Check the track thickness. Track thickness cannot be worn more than 10 percent.		
11. Check all system welds for cracks.		
12. Check system components for corrosion and bent or damaged areas.		
13. Check that all wheel studs, if supplied, are torqued to value shown on Assembly Drawing. Note that these 1/2-inch wheel studs have a different torque value than the system's other 1/2-inch bolts.		
14. Verify trolley can traverse entire length of track without snags.		
15. Inspect the trolley following the <i>After a Fall Event and Annual Inspection Checklist</i> in the Rigid Lifelines Anchor Trolley™ User Instruction Manual (103-0054).		
16. Test the operation of the trolley's swiveling connector and verify that it can rotate freely.		
17. Test the operation of the trolley and verify that the wheels rotate freely.		
18. Check system components for loose components.		
19. Check system components for loose or missing fasteners.		
20. Check system support structure for stability.		
21. Verify that hanger assemblies are installed properly and fasteners are torqued to proper values.		
22. Check that the support arms pivot bolts, if supplied, are properly installed and tightened.		
23. Check system for unauthorized modifications. Only Rigid Lifelines can authorize modifications. Remove system from service if it is modified in any way.		

©2021. All Rights Reserved. All specifications and product designs subject to change without prior notice.

## PRODUCT WARRANTY COVERAGE

Rigid Lifelines warrants its products to be free from defects in material and workmanship as follows:

- Engineered Track Equipment, Wearable End Truck Wheels, and Anchor Trolley™ Wheels and Teeth: Ten Years
- Motorized Products and Drive Components and Paint and Finishes for Non-Aluminum Components: Two Years
- Soft Goods, Devices, Connectors, and Accessories: One Year

### Ten-Year Warranty Coverage:

- Defects in equipment material and workmanship of manual track systems and equipment
- Only applies to the wearable wheels on end trucks and wearable Anchor Trolley wheels and teeth

Rigid Lifelines warrants its manual Anchor Track™ systems and equipment to be free from defects in material and workmanship for a period of ten (10) years or 20,000 hours, commencing on the date of shipment to the first retail purchaser. This warranty extends only to parts that are not subject to normal wear and tear from use (nonwearable), with the exception that it does apply to the wearable wheels supplied on end trucks and wearable Anchor Trolley wheels and teeth.

### Two-Year Warranty Coverage:

- Defects in equipment material and workmanship of motorized systems and equipment
- Paint coatings and finishes for non-aluminum components

Rigid Lifelines warrants motorized equipment to be free from defects in material and workmanship for a period of two (2) years or 4,000 hours, commencing on the date of shipment to the first retail purchaser. Rigid Lifelines warrants its paint and finishes for a period of two (2) years. Warranty claims related to coatings must be accompanied by documentation of the product's application and environmental conditions from time of delivery to time of claim.

### One-Year Warranty Coverage:

- Defects in soft goods, devices, connectors, and accessories

Rigid Lifelines warrants fall protection soft goods, devices, connectors, and accessories to be free from defects in material and workmanship for a period of one (1) year, commencing on the date of shipment to the first retail purchaser.

## WARRANTY TERMS & CONDITIONS

All warranty claims must be approved by Rigid Lifelines before any work is performed. Rigid Lifelines's obligation under this warranty is limited to the replacement or repair of Rigid Lifelines products at the factory or separate location approved by Rigid Lifelines. **Other than the above mentioned warranty, Rigid Lifelines will not honor any other warranties—whether expressed, implied, or statutory—and disclaims any warranties of merchantability or fitness for a particular purpose.** Rigid Lifelines has the right to reject any warranty claim due to harsh and/or inappropriate environmental conditions.

### Rigid Lifelines Is Not Liable for:

- Indirect, incidental, or consequential damages including lost profits, operating costs, loss of production, or travel expenses
- Components or accessories not manufactured by Rigid Lifelines (with the exception of soft goods components and accessories sold and warranted by Rigid Lifelines. For such components and accessories, the warranty shall be determined by the terms and conditions of any warranty provided by the manufacturer of such components and accessories.)
- Defective equipment or system failure caused by misuse, negligence, and improper installation or maintenance
- Equipment that has been used in excess of its rated capacity or beyond its service factors
- Rework and modification of any equipment that has been altered without Rigid Lifelines's written authorization
- Freight charges and damage incurred by freight carriers
- Any loss, injury, or damage to persons or property resulting from failure or defective operation of material or equipment
- This warranty is void for any product that is designed to deform or absorb energy during a fall event and needs to be replaced after a fall event has occurred

### Reimbursement Disclaimer:

- Written notice of any claimed system defect must be given to Rigid Lifelines within ninety (90) days of shipment.
- All requests for reimbursement must be accompanied by proper documentation.
- Reimbursement is provided in the form of a credit unless otherwise approved by Rigid Lifelines management.
- Reimbursement for labor will be provided at a maximum rate of \$75 per hour.
- All reimbursement is subject to approval by Rigid Lifelines management.

# ABOUT RIGID LIFELINES®

## OUR MISSION:

Rigid Lifelines is driven by passion for providing our customers with quality, user-friendly solutions to keep workers safer and more productive at elevation.

## OUR COMMITMENT

Rigid Lifelines professionals are dedicated to designing and manufacturing a variety of fall protection systems that meet or exceed OSHA requirements and ANSI Z359 code. Our team of engineers and safety professionals have extensive experience in the fall protection industry to manufacture fall protection systems that utilize the most advanced technology and designs.

Rigid Lifelines production facilities are certified under the ISO 9001:2015 Quality Management System to provide superior quality products. And every welder at Rigid Lifelines is certified to handle steel (D1.1) and aluminum (D1.2) in accordance with the rigorous requirements and lab testing established by the American Welders Society (AWS).

Rigid Lifelines engineers are involved with ANSI Z359 Technical Review Committee and the ANSI Z359.19 Rigid Horizontal Rail Standard. We also participate with the Safety & Health Technology Committee of the Association of Iron & Steel Technology. Our involvement allows us to keep a constant pulse on the trends in both industry practice and government regulation.

## OUR PRODUCTION:

All of our systems are designed and manufactured in the United States of America. We have production facilities in Las Vegas, Nevada, and at our headquarters in Morgantown, Pennsylvania.

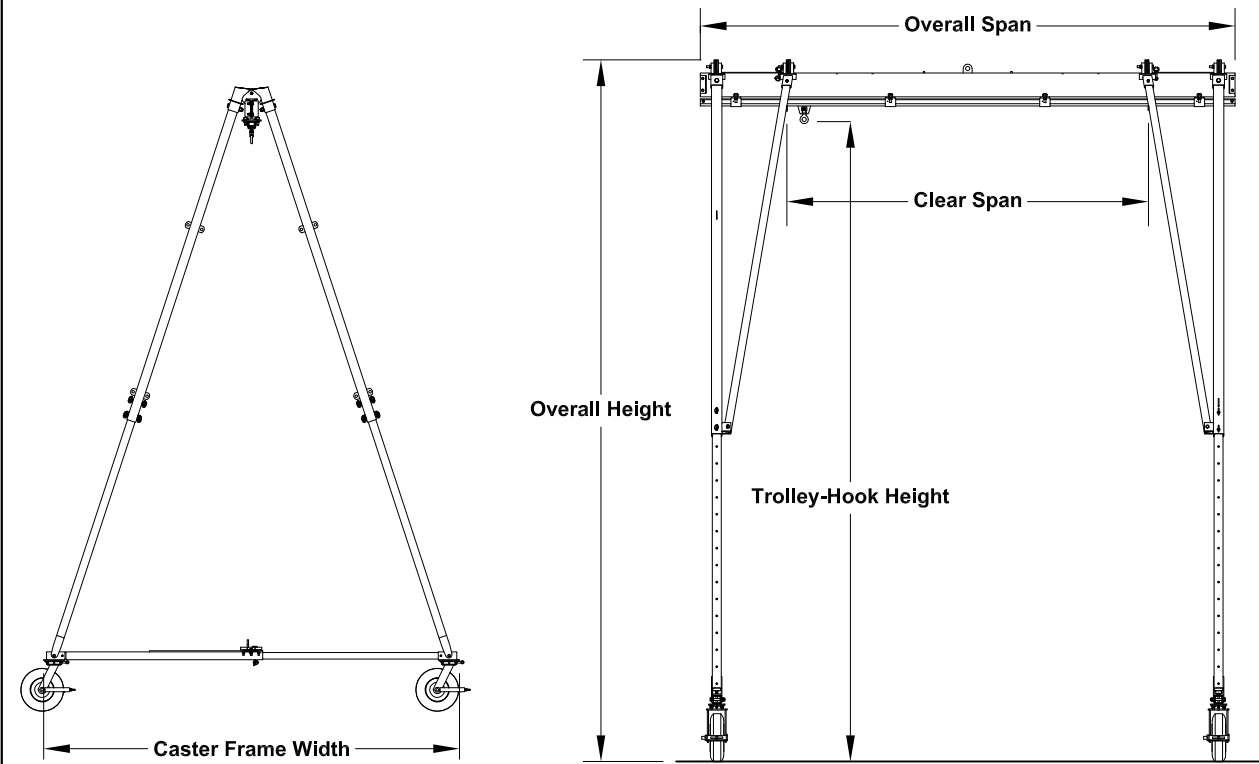
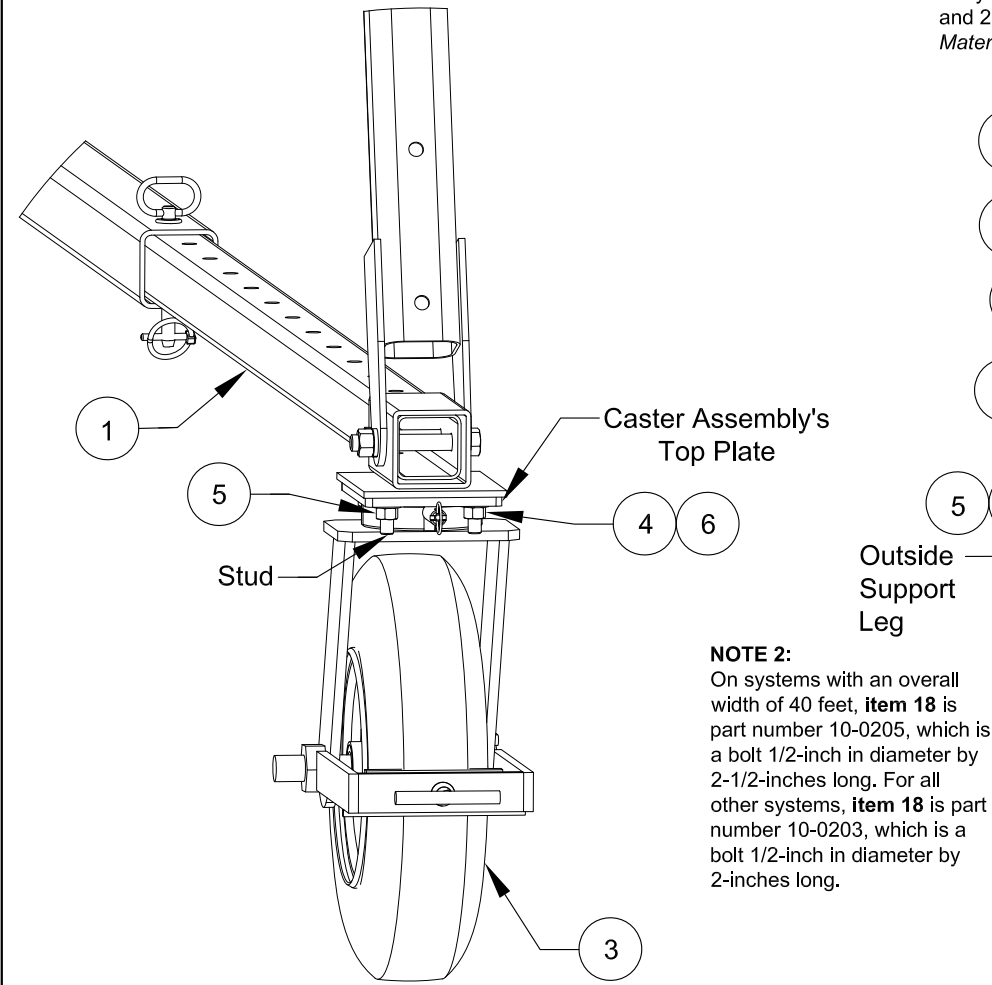


Morgantown, PA | Las Vegas, NV  
Toll Free: (800) 869-2080 | Local: (610) 286-7200 | Outside US: 1-610-286-7200 | Fax: (610) 286-0085  
[RigidLifelines.com](http://RigidLifelines.com) | [info@RigidLifelines.com](mailto:info@RigidLifelines.com)





Detail "A"  
(Caster Assemblies to  
Caster Frame Assemblies)

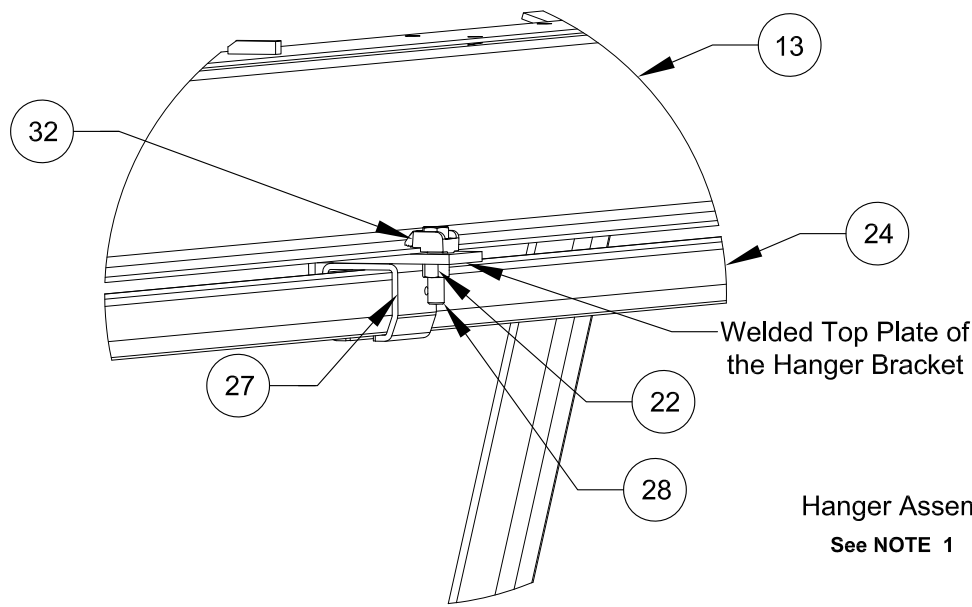


**NOTE 9:**  
While in use, the caster frame width must be at maximum distance.

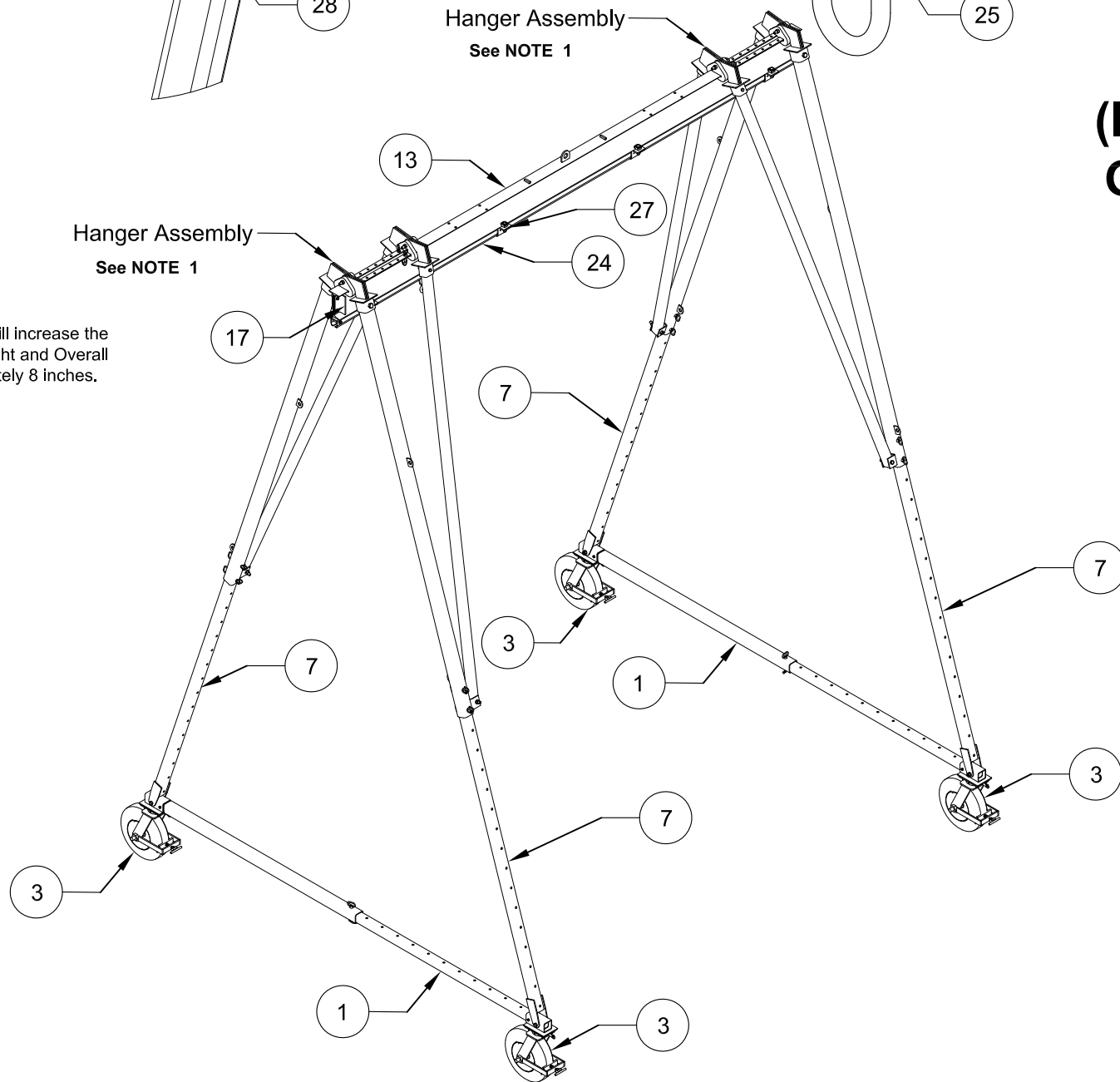
**NOTE 10:**  
While in use, the support legs (7) must be at maximum span distance. **No cantilever loading is allowed on this system.**

Adjustable-Height Rolling A-Frame Dimensions									
Worker Capacity	Overall Span (Feet)	Clear Span (Feet/Inches)	Minimum Trolley-Hook Height (Feet/Inches)	Maximum Trolley-Hook Height (Feet/Inches)	Minimum Overall Height (Feet/Inches)	Maximum Overall Height (Feet/Inches)	Maximum Caster Frame Width (Feet/Inches)	Weight (Pounds)	Part Number
1	15'	10' 0"	10' 8"	17' 1"	12' 5"	18' 11"	13' 1"	1,692	FAT-1-1518
		10' 0"	13' 1"	20' 1"	14' 10"	21' 10"	13' 1"	1,814	FAT-1-1521
		15' 1"	10' 6"	17' 0"	12' 5"	18' 11"	13' 1"	2,047	FAT-1-2018
1	20'	13' 4"	12' 11"	19' 11"	14' 10"	21' 10"	13' 1"	2,179	FAT-1-2021
		20' 1"	10' 5"	16' 11"	12' 7"	19' 0"	13' 1"	2,427	FAT-1-2518
		18' 4"	12' 10"	19' 11"	14' 11"	22' 0"	13' 1"	2,550	FAT-1-2521
1	30'	25' 3"	10' 2"	16' 8"	12' 7"	19' 0"	13' 1"	3,016	FAT-1-3018
		23' 5"	12' 7"	19' 8"	14' 11"	22' 0"	13' 1"	3,139	FAT-1-3021
		30' 3"	10' 2"	16' 8"	12' 7"	19' 0"	13' 1"	3,677	FAT-1-3518
1	35'	28' 5"	12' 7"	19' 8"	14' 11"	22' 0"	13' 1"	3,773	FAT-1-3521
		35' 2"	10' 3"	16' 8"	12' 8"	19' 2"	13' 1"	4,082	FAT-1-4018
		33' 5"	12' 8"	19' 8"	15' 0"	22' 1"	13' 1"	4,178	FAT-1-4021
2	15'	10' 0"	10' 8"	17' 1"	12' 5"	18' 11"	13' 1"	1,724	FAT-2-1518-DST
		10' 0"	13' 1"	20' 1"	14' 10"	21' 10"	13' 1"	1,965	FAT-2-1521-DST
		15' 1"	10' 6"	17' 0"	12' 5"	18' 11"	13' 1"	2,079	FAT-2-2018-DST
2	20'	13' 4"	12' 11"	19' 11"	14' 10"	21' 10"	13' 1"	2,313	FAT-2-2021-DST
		20' 1"	10' 5"	16' 11"	12' 7"	19' 0"	13' 1"	2,467	FAT-2-2518-DST
		18' 4"	12' 10"	19' 11"	14' 11"	22' 0"	13' 1"	2,590	FAT-2-2521-DST
2	30'	25' 3"	10' 2"	16' 8"	12' 7"	19' 0"	13' 1"	3,055	FAT-2-3018-DST
		23' 5"	12' 7"	19' 8"	14' 11"	22' 0"	13' 1"	3,179	FAT-2-3021-DST
		30' 3"	10' 2"	16' 8"	12' 7"	19' 0"	13' 1"	3,725	FAT-2-3518-DST
2	35'	28' 5"	12' 7"	19' 8"	14' 11"	22' 0"	13' 1"	3,821	FAT-2-3521-DST
		35' 2"	10' 3"	16' 8"	12' 8"	19' 2"	13' 1"	4,130	FAT-2-4018-DST
		33' 5"	12' 8"	19' 8"	15' 0"	22' 1"	13' 1"	4,226	FAT-2-4021-DST

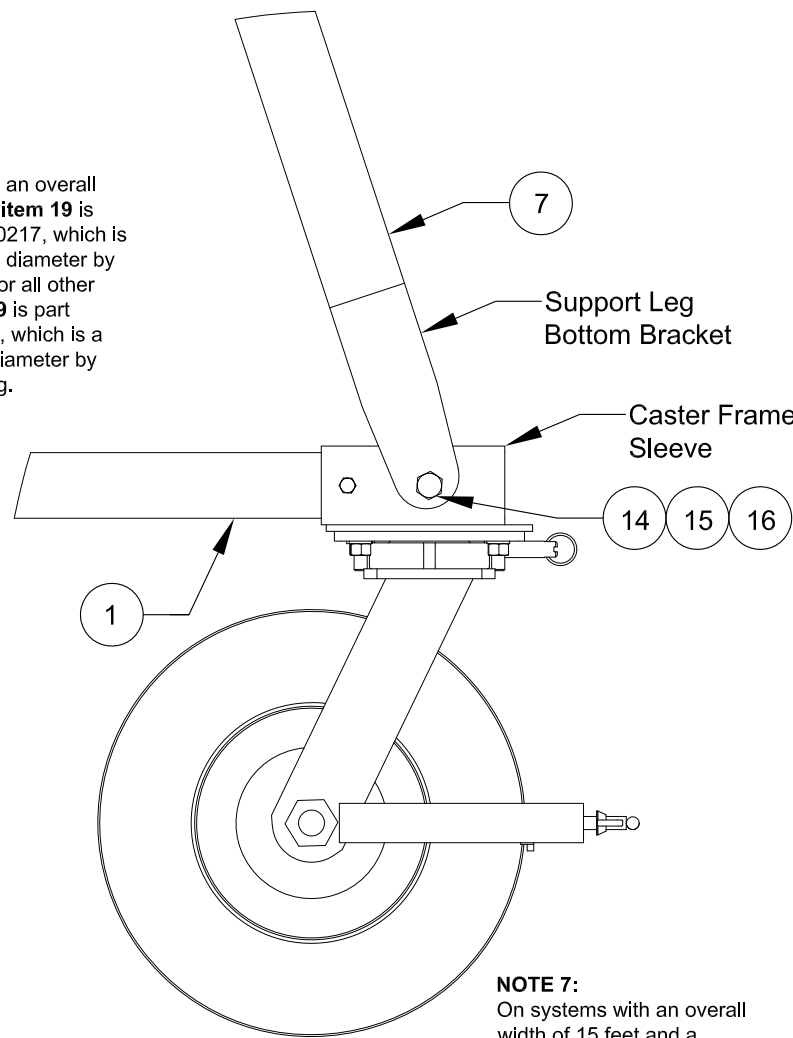
Detail "D"  
(Track to Beam Weldment)



**NOTE 11:**  
Pneumatic tires will increase the Trolley-Hook Height and Overall Height approximately 8 inches.



Detail "C"  
(Caster Frame Assemblies  
to Support Legs)



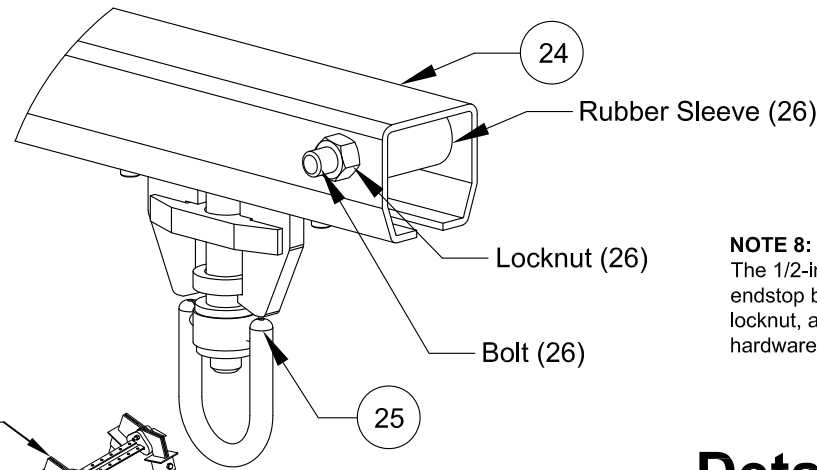
**NOTE 4:**  
On systems with an overall width of 25 feet, **item 19** is part number 10-0217, which is a bolt 1/2-inch in diameter by 4-inches long. For all other systems, **item 19** is part number 10-0206, which is a bolt 1/2-inch in diameter by 4-1/2-inches long.

**NOTE 5:**  
On systems with an overall width of 20 feet and a trolley-hook height of 20 feet, **item 31** is part number 10-0414, which is a bolt 3/4-inch in diameter by 5-inches long. For all other systems, **item 29** is part number 10-0405, which is a bolt 3/4-inch in diameter by 5-1/2-inches long.

**NOTE 6:**  
The support leg assemblies (7) ship assembled. They consist of an outside support leg, inside support leg, hardware bolting the outside and inside support legs together, and hitch with attached linch pins.

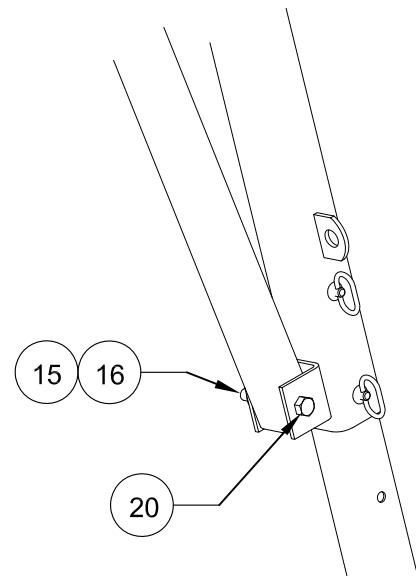
**NOTE 7:**  
On systems with an overall width of 15 feet and a trolley-hook height of 17 feet, **item 14** is part number 10-0306, which is a bolt 5/8-inch in diameter by 5-inches long. For all other systems, **item 14** is part number 10-0310, which is a bolt 5/8-inch in diameter by 4-1/2-inches long.

Detail "E"  
(Trolley and Endstops to Track)



**NOTE 8:**  
The 1/2-inch diameter by 2-inch long endstop bolt, 1/2-inch diameter hex locknut, and rubber sleeve ship in hardware kits labeled **500ES** (26).

Detail "F"  
(Inside Support Leg to  
Outside Support Leg)



Component Assembly Schedule

- If Applicable, Bolt the Caster Brakes to the Caster Assemblies
- If Applicable, Bolt the Swivel Locks to the Caster Assemblies
- Bolt the Caster Assemblies to the Caster Frame Assemblies (**Detail "A"**)
- Bolt the Hanger Assemblies to the I-Beam Weldment (**Detail "B"**)
- Bolt the Support Legs to the I-Beam Weldment (**Detail "B"**)
- Bolt the Caster Frame Assemblies to the Support Legs (**Detail "C"**)
- Bolt the Track to the I-Beam Weldment (**Detail "D"**)
- Install Trolley and Endstops to Track (**Detail "E"**)

Torque Specifications

Bolt Diameter	Hex Nut Torque	Minimum Hex Locknut Torque
*1/2 Inch	78 Foot-Pounds	51 Foot-Pounds
**5/8 Inch	154 Foot-Pounds	93 Foot-Pounds
3/4 Inch	257 Foot-Pounds	151 Foot-Pounds
7/8 Inch	341 Foot-Pounds	224 Foot-Pounds
1 Inch	514 Foot-Pounds	325 Foot-Pounds

\*The 1/2-inch diameter hex nuts (5) on the caster frame assemblies' studs should be torqued to 23 foot-pounds.

\*\*The 5/8-inch diameter locknuts (22) on the hanger assemblies (27) should be torqued to 108 foot-pounds.

**NOTE 12:**  
Component quantities and dimensions shown on this assembly drawing are for a system using one 500 Series track (24). Component quantities and dimensions may differ on other systems.

**NOTE 13:**  
The inside support legs ship assembled to the outside support legs using components 15, 16, and 20 shown in the *Building Materials Description*.

SHEET 1 OF 2

REV.	DATE	NAME	REVISION DESCRIPTION		
UNLESS OTHERWISE SPECIFIED, DIMENSIONS ARE IN INCHES. DO NOT MANUALLY UPDATE. TOLERANCES ARE: FRACTIONS ±1/16" DECIMALS .XX±.05 ANGLES .XXX±.005 XXXX±.0005			CAD GENERATED DRAWING. DO NOT MANUALLY UPDATE. DO NOT SCALE DRAWING. APPROVALS DRAWN JJB CHECKED APPVD: JRG PLOT DATE: 02/01/21 PROJECT NO.: SCALE:	RIGID LIFELINES FALL ARREST ADJUSTABLE-HEIGHT ROLLING A-FRAME ASSEMBLY DRAWING FAT-ASSEMBLY C CAD FILE:	REV. - SHEET 1 OF 2



"A"

SAFETY INSTRUCTIONS

READ BEFORE OPERATING

1. Inspect system for damaged or missing parts.

2. Never exceed the rated capacity.

3. Adjust height only when system is not in use or under load (adjustable models).

4. Do not use system on an incline.

5. Push the system by hand only.

6. Do not push or pull Rolling A-Frame with a forklift or other vehicle.

7. Workers should only work directly under the trolley track beam. Do not pull sideways on fall protection system.

8. The maximum angle a lanyard can make off plumb is 10 degrees, or 18 inches off track centerline or end of beam, whichever is smaller.


9. Do not anchor legs to the floor.

10. Do not operate system unless you have read and understand all the safety instructions.

11. Caster wheels must always be in widest position unless transporting.

12. Caster wheels must have brakes applied or hooked to prevent rolling during use.

13. Never use caster wheels near a ledge.



LABEL # 53-0549RigidLifelines.com

"B"


RIGID LIFELINES

(800) 889-2080 :: RigidLifelines.com

P/N 53-0206

SEE NOTE 1 FOR MORE INFO.

"C"



P/N 53-0047

WARNING

TO PREVENT TROLLEY OR END TRUCK, IF SUPPLIED, FROM RUNNING OUT OF THE TRACK, DO NOT OPERATE SYSTEM WITHOUT END STOP BOLTS SECURED ON EACH END OF RUNWAY AND BRIDGE, IF SUPPLIED.

DO NOT IMPACT END STOPS AT HIGH SPEED

DO NOT USE END STOPS FOR REPETITIVE BRIDGE IMPACTS, IF BRIDGE IS SUPPLIED

DO NOT SKEW BRIDGE, IF SUPPLIED, IN RUNWAYS

SEE NOTE 1 FOR MORE INFO.

P/N 53-0047

"D"

MADE IN

★★★★★

THE USA

P/N 53-0023

P/N 53-0023

SEE NOTE 1 FOR MORE INFO.

"E"

RIGID LIFELINES

PEOPLE & EQUIPMENT

PER TRACK. 900 LB. MAAF EA. PERSON

(800) 889-2080

RigidLifelines.com

SEE NOTE 2 FOR MORE INFO.

P/N 53-0359

"F"

BEFORE ADJUSTING UNIT HEIGHT, FOLLOW INSTRUCTIONS BELOW

• Do not adjust or disassemble while system is in use.

• Never stand under system when adjusting height or disassembling system.


• To adjust height: secure trolley in center of I-beam. Use lift truck, existing overhead hoist, or Rigid Lifelines' height adjustment kit. (Consult Instructions in manual)

• Raise system slightly to relieve weight from push/pull pins.

• Remove pins and slowly raise system to desired height.

• When each leg reaches desired height, reinsert push/pull pins and secure the attached linch pin.

• When desired height has been reached, check that the same number of holes are visible on each lower leg.



LABEL # 53-0550RigidLifelines.com

P/N 53-0550

SEE NOTE 1 FOR MORE INFO.

P/N 53-0552

SEE NOTE 1 FOR MORE INFO.

"G"

SAFETY INSTRUCTIONS

BEFORE ADJUSTING CASTER FRAME WIDTH

1. Never adjust caster frame width while system is in use.

2. To adjust caster frame width, slightly lift the system using a lift truck or overhead crane. Lifting should only be done with a push/pull pins in place and secured in the main legs.


3. Remove the caster frame push/pull pin and adjust caster frame to desired width.

4. Reinsert the push/pull pin and secure with attached linch pin.

5. Check that the same number of holes are visible on each caster frame.

6. Never stand under system when adjusting caster frame width.

7. While in use, the caster frame width must be at maximum distance.



LABEL # 53-0551RigidLifelines.com

P/N 53-0551

"H"

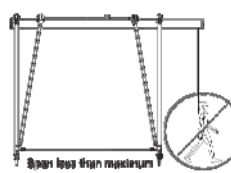
WARNING

READ BEFORE OPERATING


ADJUSTABLE-HEIGHT ROLLING A-FRAME

• Failure to follow these instructions may result in injury or death.

• While in use, the support legs must be at maximum span distance. No cantilever loading is allowed on this system.



Span less than maximum



LABEL # 53-0552RigidLifelines.com

SEE NOTE 1 FOR MORE INFO.

"I"

WARNING

DO NOT ADJUST HEIGHT BEYOND THIS POINT. EXCEEDING LAST HOLE ALIGNMENT COULD RESULT IN INJURY OR DEATH.

LABEL # 53-0039

P/N 53-0039

SEE NOTE 1 FOR MORE INFO.

"J"

RIGID LIFELINES

Division of Spauld, Inc.

Serial #: 123456-789

Model #: X12XXXX34.5678.90

MFG Date: 00/0000

P/N 53-0039

SEE NOTE 1 FOR MORE INFO.

"K"

WARNING

You must read and understand the manual before you assemble, operate, or disassemble this equipment.

Failure to do so may result in serious injury or death.

To download a replacement manual, visit RigidLifelines.com or scan the QR code.

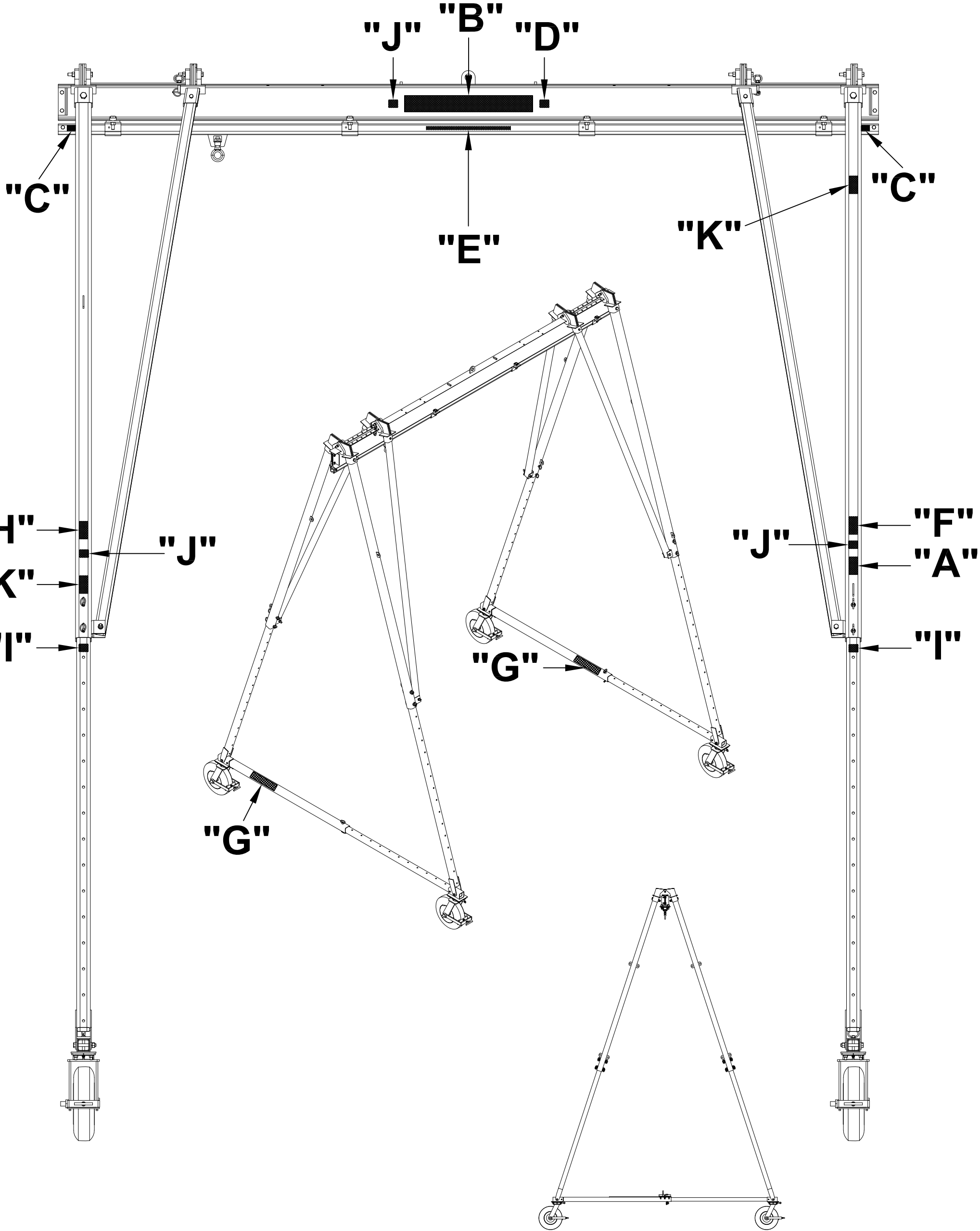


SCAN ME

MFG 10-0000

P/N 53-0590

SEE NOTE 1 FOR MORE INFO.



NOTE 1:

LABEL 53-0549 "A" SHOULD BE CENTERED JUST ABOVE THE TOP HOLE ON THE OUTSIDE SUPPORT LEG ON BOTH SIDES.

LABEL 53-0206 "B" SHOULD BE CENTERED ON BOTH SIDES OF THE I-BEAM WELDMENT.

LABEL 53-0047 "C" SHOULD BE PLACED ON BOTH ENDS OF THE TRACK ON BOTH SIDES.

LABEL 53-0023 "D" SHOULD BE PLACED TO THE RIGHT OF LABEL "B" ON BOTH SIDES.

LABEL 53-0550 "F" SHOULD BE CENTERED JUST ABOVE LABEL "A" ON BOTH SIDES.

LABEL 53-0551 "G" SHOULD BE CENTERED ON EACH CASTER FRAME ASSEMBLY OUTER TUBE ABOVE THE HOLE FOR THE LINCH PIN.


LABEL 53-0552 "H" SHOULD BE CENTERED JUST ABOVE THE TOP HOLE ON THE OUTSIDE SUPPORT LEG OPPOSITE TO LABEL "A" ON BOTH SIDES.

LABEL 53-0039 "I," WHEN ADJUSTED TO MAXIMUM HEIGHT, SHOULD BE CENTERED ON BOTH SIDES ON TOP OF EACH OUTSIDE SUPPORT LEG ABOVE THE TOP HOLE.

LABEL "J" SHOULD BE CENTERED ON BOTH SIDES OF THE I-BEAM WELDMENT AND ON ALL FOUR OUTSIDE SUPPORT LEGS.

LABEL 53-0590 "K" SHOULD BE PLACED ON THE VERTICAL LEGS AT EYE LEVEL (APPROXIMATELY 62 INCHES FROM THE GROUND).

SHEET 2 OF 2

REV.	DATE	NAME	REVISION DESCRIPTION		
CAD GENERATED DRAWING. DO NOT MANUALLY UPDATE. DO NOT SCALE DRAWING				FALL ARREST ADJUSTABLE-HEIGHT ROLLING A-FRAME LABEL PLACEMENT DRAWING	
APPROVALS		DATE			
DRAWN:		3/24/15			
CHECKED:					
APPVD: JRG		05/11/21			
PLOT DATE: WT.			SIZE	DWG. NO.	REV.
PROJECT NO.:		SCALE:	C	FAT-ASSEMBLY	-
CAD FILE:			SHEET 2 OF 2		